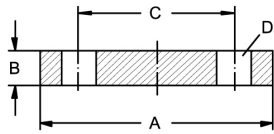


Welding neck flanges EN 1092-1

Art.No EUR Art.No EUR

Blind flange EN 1092-1, form A, PN 16

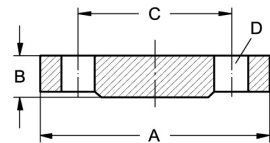
DN	A	B	C	D		AISI316L-1.4404	AISI316Ti-1.4571		
50	165	18	125	4xM16x65		587636	Enquiry	584136	Enquiry
65	185	18	145	4xM16x65		587637	Enquiry	584137	Enquiry
80	200	20	160	8xM16x75		587638	Enquiry	584138	Enquiry
100	220	20	180	8xM16x75		587639	Enquiry	584139	Enquiry
125	250	22	210	8xM16x75		587641	Enquiry	584141	Enquiry
150	285	22	240	8xM20x80		587642	Enquiry	584142	Enquiry
200	340	24	295	12xM20x80		587644	Enquiry	584144	Enquiry
250	405	26	355	12xM24x90		587646	Enquiry	584146	Enquiry
300	460	28	410	12xM24x90		587648	Enquiry	584148	Enquiry



10 - 40 Use flanges ND 40.

Blind flange EN 1092-1, form B1, PN 16

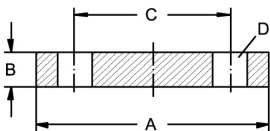
DN	A	B	C	D		AISI316L-1.4404	AISI316Ti-1.4571		
50	165	18	125	4xM16x65		587736	Enquiry	584336	Enquiry
65	185	18	145	4xM16x65		587737	Enquiry	584337	Enquiry
80	200	20	160	8xM16x75		587738	Enquiry	584338	Enquiry
100	220	20	180	8xM16x75		587739	Enquiry	584339	Enquiry
125	250	22	210	8xM16x75		587741	Enquiry	584341	Enquiry
150	285	22	240	8xM20x80		587742	Enquiry	584342	Enquiry
200	340	24	295	12xM20x80		587744	Enquiry	584344	Enquiry
250	405	26	355	12xM24x90		587746	Enquiry	584346	Enquiry
300	460	28	410	12xM24x90		587748	Enquiry	584348	Enquiry



10 - 40 Use flanges ND 40.

Blind flange EN 1092-1, form A, PN 25

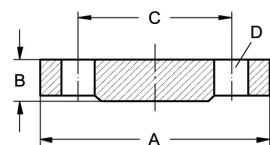
DN	A	B	C	D		AISI316L-1.4404	AISI316Ti-1.4571		
200	360	30	310	12xM24x90		587844	Enquiry	584544	Enquiry
250	425	32	370	12xM27x110		587846	Enquiry	584546	Enquiry
300	485	34	430	16xM27x110		587848	Enquiry	584548	Enquiry
350	555	38	490	16xM30x120				584501	Enquiry
400	620	40	550	16xM33x130				584502	Enquiry
500	730	45	660	20xM33x130				584503	Enquiry



10 - 150 Use flanges ND 40.

Blind flange EN 1092-1, form B1, PN 25

DN	A	B	C	D		AISI316L-1.4404	AISI316Ti-1.4571		
200	360	30	310	12xM24x90		587944	Enquiry	584744	Enquiry
250	425	32	370	12xM27x110		587946	Enquiry	584746	Enquiry
300	485	34	430	16xM27x110		587948	Enquiry	584748	Enquiry
350	555	38	490	16xM30x120				584701	Enquiry
400	620	40	550	16xM33x130				584702	Enquiry
500	730	45	660	20xM33x130				584703	Enquiry



10 - 150 Use flanges ND 40.